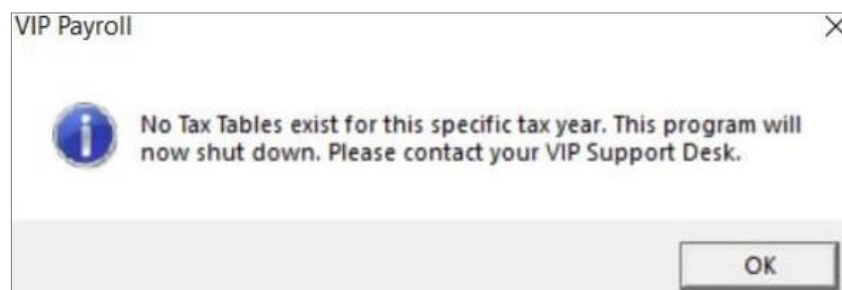


We realise that we can no longer postpone the release of the Namibia 2019/2020 Tax Tables in anticipation of possible changes.

It is, therefore, extremely important that you extract the attached file in your Premier/Classic Release 5.1a or your Sage 200c VIP Release 5.1a folder.

The following message will display when users attempt to start a new period into March 2019, without the new tax files.



**1. When must the software be installed?**

Before payslip and report printing for the final processing period of 2018/2019. Once you have installed the files, please do a General Recalculation in all your Namibia companies.

Main Menu > Payroll Menu > General recalculation

**Note:** The Tax Tables have remained unchanged, but it is good practice to do a General Recalculation when extracting a new file into your folder

**2. Can Premier HR and Premier ESS users install the Namibia Tax Tables?**

Yes, they can. No additional software needs to be installed for Premier HR and Premier Employee Self Service users.

**3. How do I install the Namibia Tax Tables?**

Ensure that your system is on Release 5.1a

The installation consists of a zip file – **NAMTAX.ZIP** - that must be extracted into your live VIP directory.

Existing files in the directory must be overwritten with the new files.

[Click here](#) to download the NAMTAX.ZIP files.

[Click here](#) to view the Installation Notes.

Should you have any concerns or enquiries, please contact our team via e-mail [Support.HRandPayroll@sage.com](mailto:Support.HRandPayroll@sage.com)